



Period 6 sessions

Year 11

Elevate: Time Management

STUDY TIMETABLE

	Monday	Tuesday	Wednesday	Thursday	Friday
4pm					
5pm					
6pm					
7pm					
8pm					
9pm					
10pm					
11pm					
12am					

	Saturday	Sunday
6am		
7am		
8am		
9am		
10am		
11am		
12pm		
1pm		
2pm		
3pm		
4pm		
5pm		
6pm		
7pm		
8pm		
9pm		
10pm		
11pm		
12am		

© Elevate Education 2016



@UKelevate



Elevate Education



elevateeducation.com

elevate
education



2nd round of Mocks

- Starts 26th Feb to the 8th March
- Drama Exam: 7th March

Spanish: Monday

Period 6 Lessons

2023-24



SPANISH	Topic	PAPER
22 nd January	Family and friends	WRITING: 90-word question
29 th January	Technology	SPEAKING: Role play & Photocard
5 th February	TV, Cinema and Music	WRITING: Picture & 40-word
12 th February	Going out and Free time	Writing: 90-word question

AQA
Realising potential

GCSE
SPANISH
(8698)

Specification
For teaching from September 2016 onwards
For exams in 2018 onwards

Version 1.2 12 October 2016



Geography: Monday

Date	Paper	Content Covered	Complete
12/11/2023	1, 2, 3	OS Map Skills (Grid references, approximation coverage, scale, distance, direction, map symbols).	
12/18/2023	1	Paper 1 Q3 Coasts. Hard and soft engineering strategies to protect the coastline from the physical processes. Addressing the error from the mocks where students were unable to discuss the costs (disadvantages) and benefits (advantages) of the methods. Practice 6 mark soft engineering Q using beach nourishment and dune regeneration as examples.	
1/8/2024	1	Paper 1 Q1 Challenge of Natural Hazards. Causes of climate change human and physical. Recap of human causes (deforestation and burning of fossil fuels) and physical causes (volcanic activity and milankovitch cycles). 9 Mark exam Q, model structure with specific focus on a strong conclusion. 1 Students complete the Exam Q in period 6 and teacher will mark and feedback at the start of next P6.	
1/15/2024	2	Paper 2 Q1 Urban Issues. Rio de Janeiro Case Study. Context, social, economic and environmental issues followed by sustainable solutions. (Favela-Bairro project). Students provided with exam questions to see when they would need to use the Rio-de Janeiro case study.	
1/22/2024	1	Paper 1 Q4. Rivers. Recap of upper course landform formation in a river. V-Shaped valleys, Waterfalls, Steep-Sided Gorge. Recap of erosional processes. Waterfall 6 marker in exam conditions.	
1/29/2024	2	Paper 2 Q2. Changing Economic World. Nigeria Case Study Revision. Context, social, economic and environmental opportunities and challenges. Focus on Shell in Nigeria as a positive or negative catalyst for development. Exposure to past exam questions to see when students would apply the Nigeria case study.	
2/5/2024	1	Paper 1 Question 2. Living World. Amazon Rainforest Deforestation Case Study. Causes, impacts, solutions. Select exam Qs, 1-2-3-4-6 markers on Rainforest deforestation.	
2/12/2024	2	Paper 2 Question 1. Urban Issues. Bristol Case Study. An example of a UK city undergoing urban change. Focus on context and then social, economic and environmental opportunities and challenges. Opportunity the Temple Quarter Regeneration scheme. Students then exposed to a variety of exam questions where they would need to implement the Bristol case study.	
2/26/2024	2	Paper 2 Mock Revision session.	



History: Monday

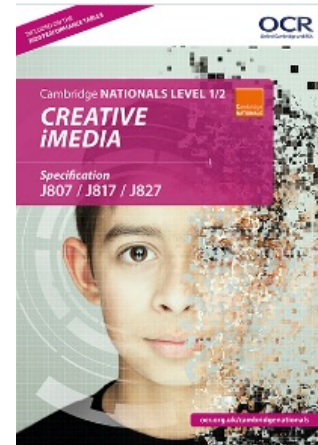
Date	Topic
Wednesday 24 th January 2024	1.1-1.3 Ideas about the causes of disease and approaches to treatments. Dealing with the Black Death
Wednesday 8 th February 2024	2.1-2.4 The Medical Renaissance in England, William Harvey and dealing with the Great Plague of London
Wednesday 14 th February 2024	3.1-3.3 Medicine in the 18 th and 19 th Century
Wednesday 28 th February 2024	3.1-3.3 Medicine in the 18 th and 19 th Century
Monday 4 th March 2024	4.1-4.4 Medicine in modern Britain 1900-2020
Monday 11 th March 2024	4.1-4.4 Medicine in modern Britain 1900-2020
Wednesday 20 th March 2024	5.1 The British sector of the Western \front, 1914-18: injuries, treatments, and the trenches.



Creative I-Media:

Monday: 3:15pm-4:15pm
Thursday: Lunch time
Friday: 3:15pm-4:15pm

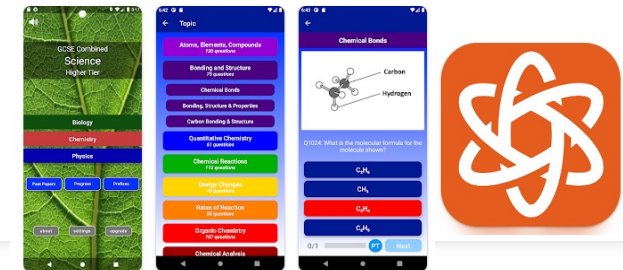
Creative I-Media	Topic
1/12/2024	RO96 coursework Task assessment 2: brief
1/19/2024	RO96 coursework Task assessment 2: pre-production documents/write up ideas
1/26/2024	RO96 coursework Task assessment 2: storyboard/creating assets
2/2/2024	RO96 coursework Task assessment 2: creating animation
2/9/2024	RO96 coursework Task assessment 2: Creating and Review animation
2/16/2024	RO96 coursework Task assessment 2: Review and evaluation R096



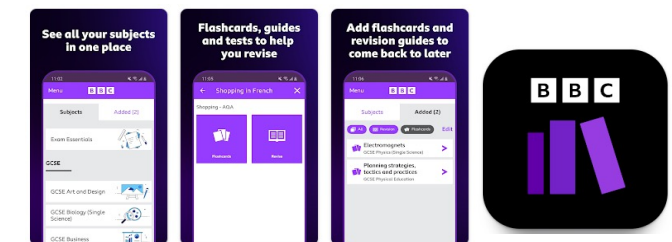
Science: Tuesday

Date	Topic
23rd Jan	Physics Paper 1
30th Jan	Biology Paper 1
6th Feb	Chem Paper 1
13th Feb	Physics Paper 1
Half Term	

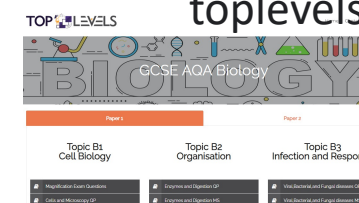
GCSE Science Higher Revision App



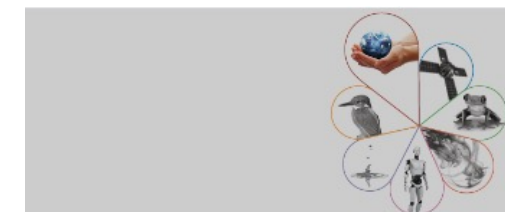
BBC Bitesize Revision App



toplevels.co.uk



2024																															
	1	2	3	4	5	6	7	8	9	10	11	12	13	14	15	16	17	18	19	20	21	22	23	24	25	26	27	28	29	30	31
Jan	Mo	Tu	We	Th	Fr	Sa	Su	Mo	Tu	We	Th	Fr	Sa	Su	Mo	Tu	We	Th	Fr	Sa	Su	Mo	Tu	We	Th	Fr	Sa	Su	Mo	Tu	We
Feb	1							2							3						4								5		
	Th	Fr	Sa	Su	Mo	Tu	We	Th	Fr	Sa	Su	Mo	Tu	We	Th	Fr	Sa	Su	Mo	Tu	We	Th	Fr	Sa	Su	Mo	Tu	We	Th		
					6							7							8							9					



GCSE Combined Science:

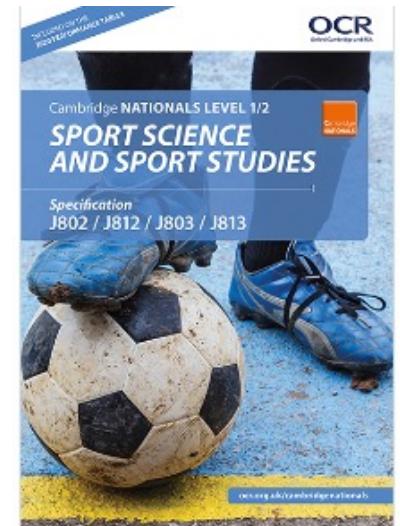
Sport Studies: Wednesday

Tuesday: Week 1- targeted session for completion of coursework [MIOL].

Mon/Tue/Thurs Week 1 and week 2: targeted session for completion of coursework [JECO].

- Exam date: Monday 13th May – afternoon

Date	Topic
Wednesday 10 th April	Topic area 1 – user groups, barriers, solutions, factors affecting popularity of sport in the UK, Emerging sports
Wednesday 17 th April	Topic area 2 – sporting values, Olympic/Paralympic values, sports initiatives, sporting behaviour, performance enhancing drugs
Wednesday 24 th April	Topic area 3 – features of a major sporting event, positive/negatives of hosting a major sporting event,
Wednesday 1 st May	Topic area 4 – National governing bodies EXAM TECHNIQUE – long essay questions
Wednesday 8 th May	Topic area 5 – Role of Technology in sport, positive/negative effects of using technology in sport



Drama

Until the 7th March p6 will be focussed on rehearsing Blood Brothers for the live performance to the visiting examiner

After the 7th March p6 will be focussed on the written exam.



English: Thursday

Spring Term 1 - focusing on **English Language Paper 1**

Thursday 11 th January	Question 1 (explicit information) & Question 2 (analysing language)
Thursday 18 th January	Question 3 (analysing structure)
Thursday 25 th January	Question 4 (evaluation based on a statement)
Thursday 1 st February	Question 5 (creative writing)
Thursday 8 th February	Planning Questions 1-4
Thursday 15 th February	Planning Question 5



GCSE English Literature

8702

Next exam: 13 May 2024

English Literature Paper 1



GCSE English Language

8700

Next exam: 23 May 2024

English Language Paper 1

Maths: Thursday

For Foundation targeting grade 5:

18/01 – Two-way tables and use of a calculator
25/01 – Quadratic & cubic graphs and proportion
01/02 – Venn Diagrams and compound measures
08/02 – Simultaneous equations and Trigonometry (missing angles)
15/02 – Estimation and percentages



For Higher Tier Maths students we will be covering the following this half term -

11/01/2024 - Inverse Proportion (only one topic as we introduced new format and booklets)
18/01/2024 - Nth term of quadratic sequences and lines and midpoints.
25/01/2024 - Factorising Quadratics and Histograms
01/02/2024 - Probability and Direct Proportion
08/02/2024 - Rearranging Formula and Completing the Square
15/02/2024 - Exact Trig values and Area and Perimeter of sectors.

Art:

P6 for art runs Thursday week A.



GCSE ART AND DESIGN

(8201, 8202, 8203, 8204, 8205,
8206)

Specification
For teaching from September 2016 onwards
For GCSE exams in 2018 onwards
Version 1.0 23 October 2015



Hospitality and Catering



VOCATIONAL



WJEC LEVEL 1 / 2 AWARD in
**HOSPITALITY AND
CATERING**

REGULATED BY OFQUAL AND CCEA REGULATION
DESIGNATED BY QUALIFICATIONS WALES

SPECIFICATION

Teaching from 2016
For award from 2018

Date	Focus	Content
w/c 22nd Jan	Coursework guidance	How to write recipes. dovetailing
w/c 29th Jan	Coursework guidance	How to structure work and evaluation.
w/c 5th Feb	Unit 1 - health and safety provision and laws	HASAWA, COSHH, HACCP, PPER, RIDDOR
w/c 12th Feb	Unit 1 - health and safety provision and laws	
w/c 26th Feb	Unit 1 – health and safety risk assessments	Writing risk assessments, hazards and preventions
w/c 4 th March	Unit 1 -health and safety risks to customers	As above
w/c 11 th March	Unit 1 - Workflow of the kitchen front of house	Materials needed, cleaning, first aid, stock control
w/c 18 th March	Unit 1 – workflow of kitchen back of house	Dress code, equipment, food safety equipment, stock control
w/c 8 th April	Unit 1 – Customer needs and customer service	Trends, dietary needs, leisure requirements,
w/c 15 th April	Unit 1 – Hospitality and Catering providers	Structure of the industry, types of food service
w/c 22 nd April	Unit 1 - Hospitality and Catering providers	Standards and ratings
w/c 29 th April	Unit 1 – Working conditions in industry	Job roles – kitchen brigade, front of house
w/c 7 th May	Unit 1 - Working conditions in industry	Contracts, working hours, holiday entitlement
w/c 13 th May	Unit 1 - Working conditions in industry	Factors affecting the success of a business
w/c 20 th May	Unit 1 – Food safety	Causes of ill health, microbes and chemicals
w/c 3 rd June	Unit 1 – Food safety- Symptoms of ill health	Food poisoning, allergies, and intolerances.
w/c 10 th June	Unit 1 – Food legislation	Laws and packaging/labelling

Statistics:

Friday KS4 Lunch time -

From now until the end of the examinations.

Year 11 Statistics only – Drop in sessions in U7 with Mr. Suffolk

Collection of Data

*Processing and
Representing Data*

Summarising Data

*Scatter Diagrams and
Correlation*

Paper 1 :
Wednesday 05 June Afternoon
1h 30m Statistics

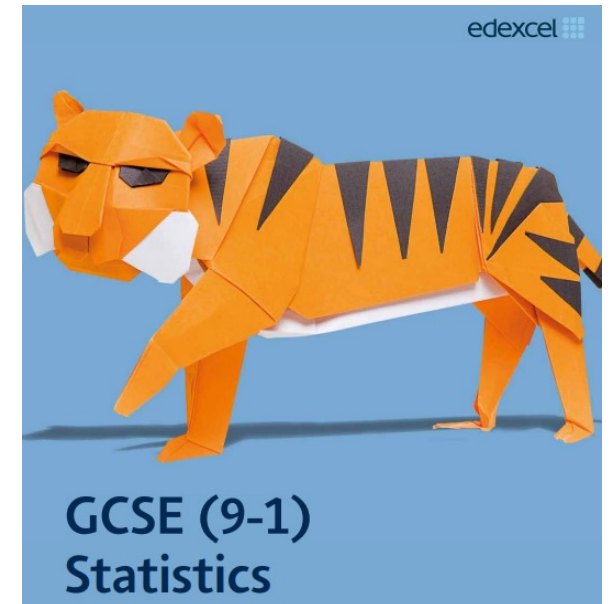
Paper 2 :
Monday 17 June Afternoon
1h 30m Statistics

Time Series

Probability

Index Numbers

Probability Distributions



Economics:



RE:

